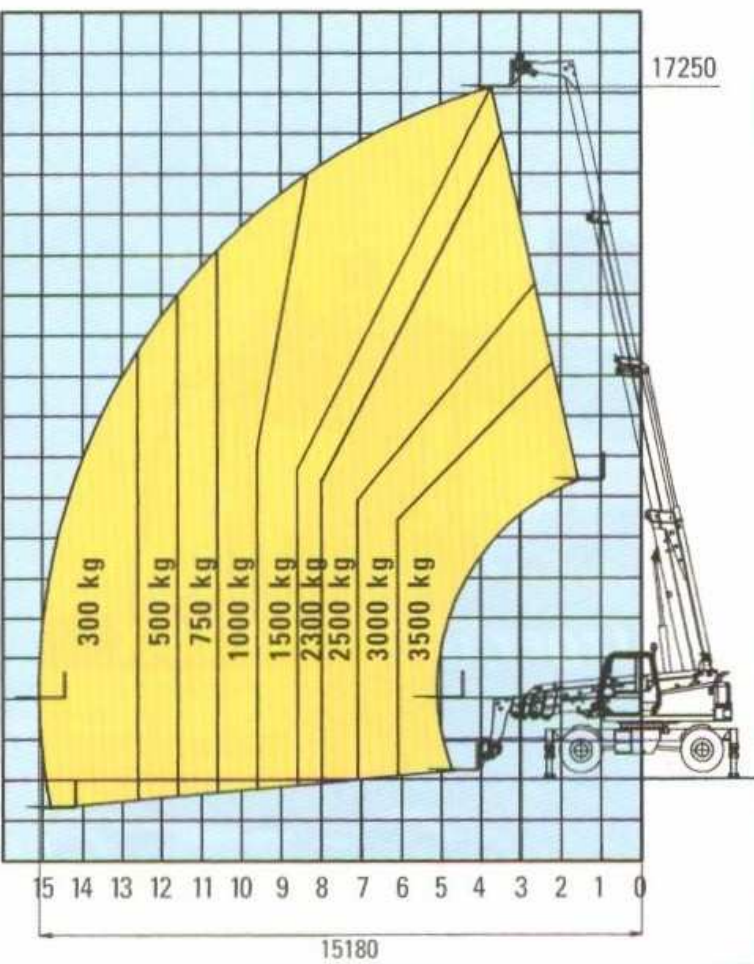
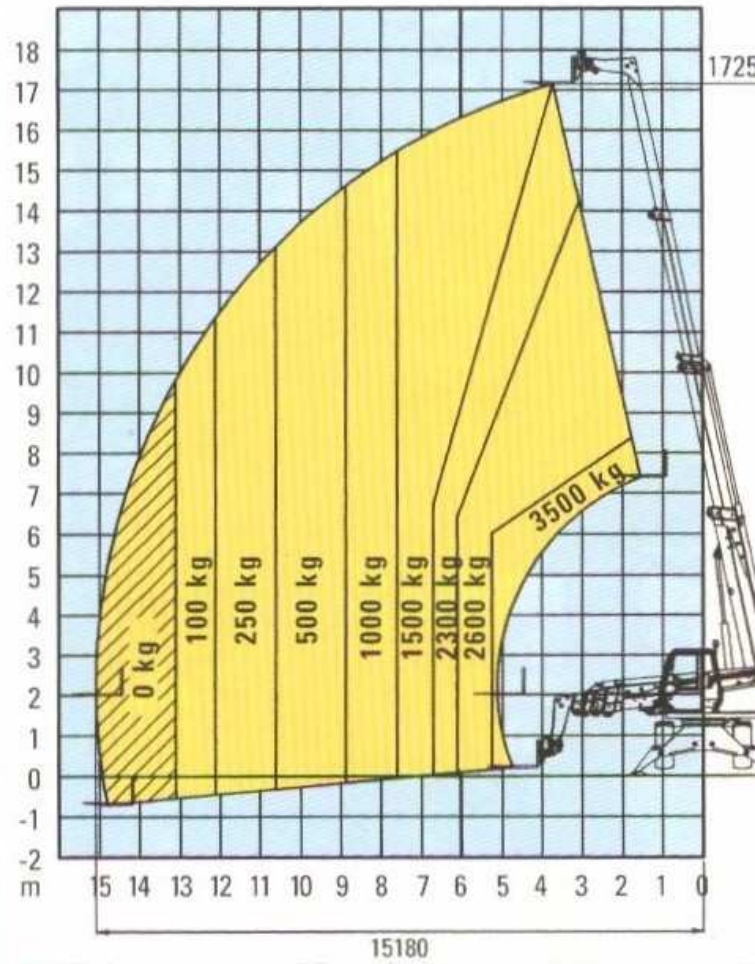


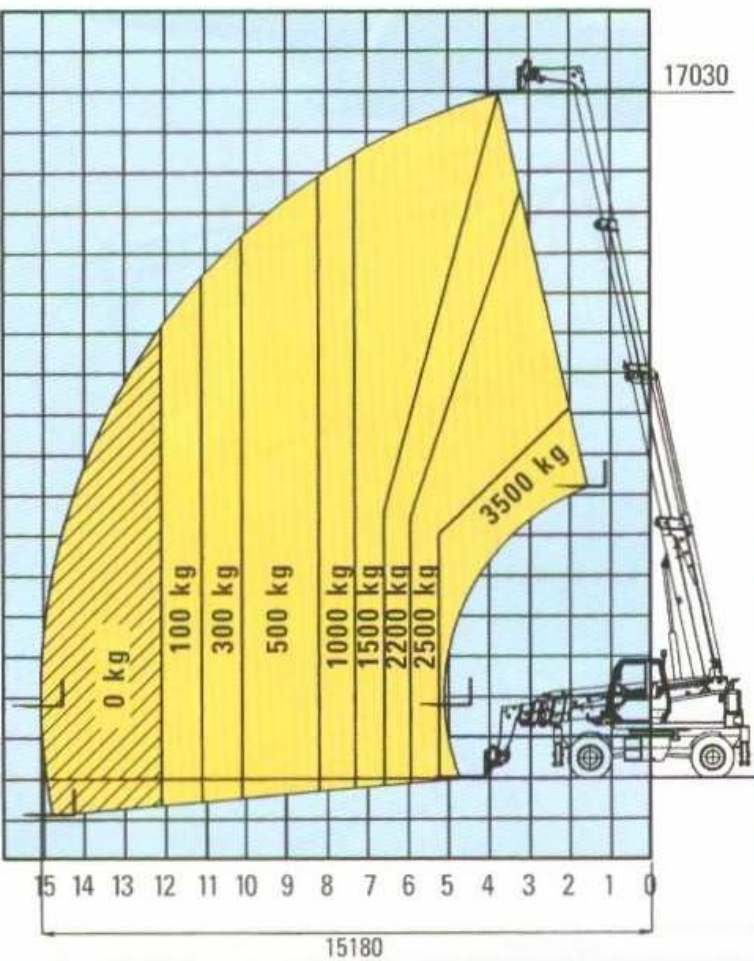
fall vorne mit Abstützung



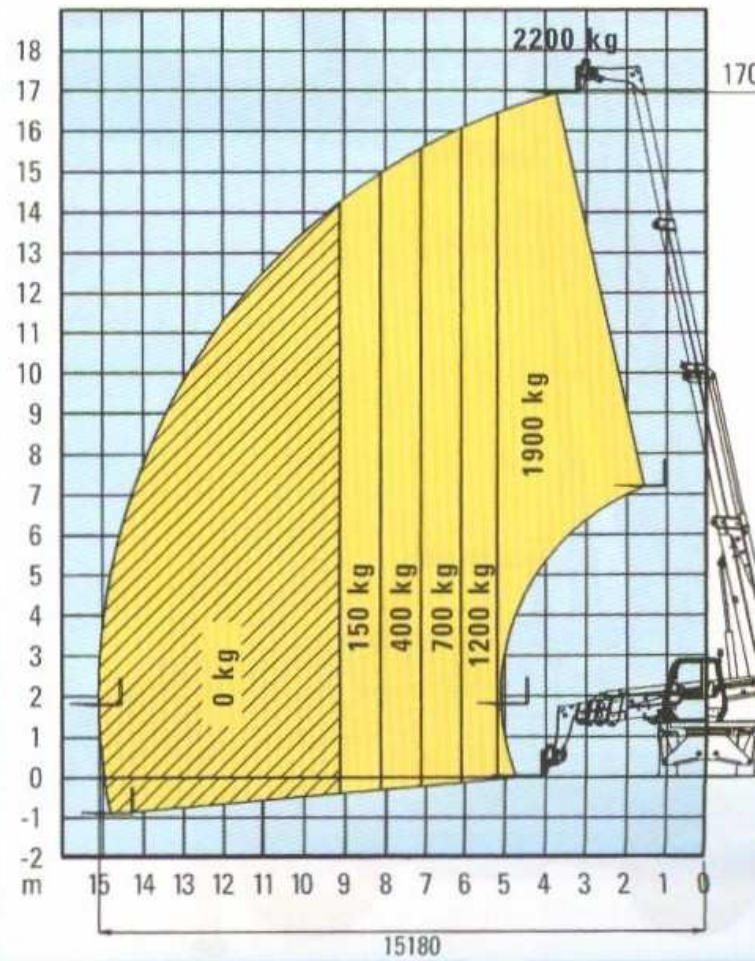
Lastfall seitlich mit Abstützung



fall vorne ohne Abstützung



Lastfall seitlich ohne Abstützung





## Specifications

MODEL	F 18 TSX	
MEASUREMENTS	Metric	Imperial
Lifting height (maximum)	17.25 m	56 ft 7 in
Lifting capacity (maximum)	3,500 kg	7,715 lbs
Lift capacity at maximum height	2,000 kg	4,409 lbs
Lift capacity at maximum reach	300 kg	661 lbs
Forward reach (maximum)	15.18 m	49 ft 10 in
Reach at maximum height	3.8 m	12 ft 6 in
<b>A</b> Height	2.93 m	9 ft 6 in
<b>B</b> Height at steering wheel	2.07 m	6 ft 9 in
<b>C</b> Width	2.40 m	7 ft 5 in
<b>D</b> Inside cab width	91 cm	3 ft
<b>E</b> Track	1.95 m	6 ft 5 in
<b>F</b> Wheelbase	3.03 m	9 ft 11 in
<b>G</b> Length at stabilisers	4.86 m	15 ft 11 in
<b>H</b> Length at fork-holder plate	6.58 m	21 ft 7 in
<b>I</b> Ground clearance	37 cm	1 ft 2 in
<b>L</b> Overall width, stabilisers extended	3.66 m	12 ft
<b>M</b> Side rear overhang	2.26 m	7 ft 5 in
<b>N</b> Side front overhang	4.18 m	13 ft 8 in
<b>01</b> Obstruction angle	23°	23°
<b>02</b> Departure angle	23°	23°

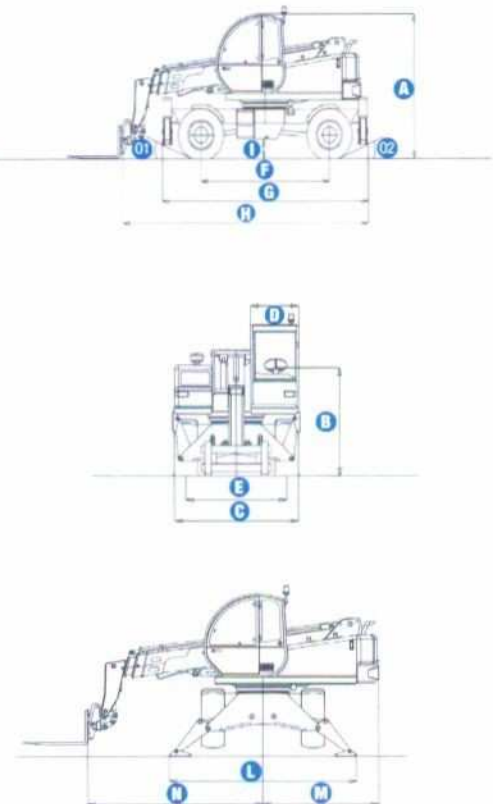
PRODUCTIVITY		
Lifting/lowering speed	15 sec./12 sec.	15 sec./12 sec.
Extension/retraction speed	24 sec./15 sec.	24 sec./15 sec.
Inside/outside turning radius	2.34 m/4 m	7 ft 8 in/13 ft 1 in
Break out force	7,400 kg	16,312 lbs
(with 500 L shovel SAE J 732/80)		
Towing capacity at dynamometer	7,000 kg	15,431 lbs
Travel speed	30 km/h	18.6 mph
Fork-holder plate rotation	145°	145°
Chassis levelling on front axle	+/-6°	+/-6°
Floating forks	L 1200 mm	L 3 ft 11 in
	Section 130 x 50 mm	Section 5 in x 2 in
Tyres (DIN 70361)	18-19.5" PR16 8 holes wheel disc	

POWER		
Engine	Perkins Turbo Diesel 74,4 kW (101 HP)	
Tank capacities		
Fuel	125 L	27 gal
Engine oil	11.5 L	2 gal
Hydraulic oil	200 L	44 gal
Hydraulic output/pressure	130 L/min-250 bars	29 gal/min-3,626 psi

WEIGHT		
Weight*	12,900 kg	28,437 lbs

STANDARDS COMPLIANCE	
	Operating cab conforms to ISO3471 (ROPS) and ISO3449 (FOPS)
	Low emission engine conforms to UE 97/68 directives.

\* Weight will vary depending on options and/or country standards



Lift capacity chart (with stabilisers)

EN1459, Annex B