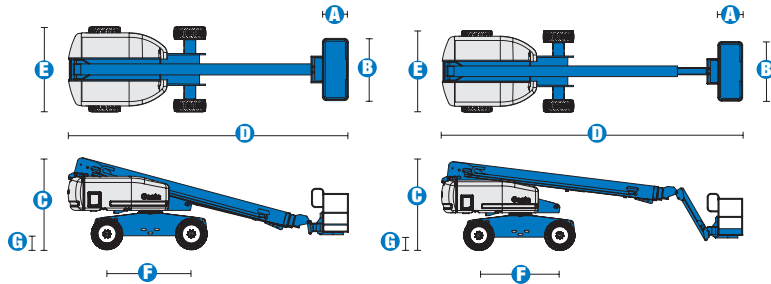
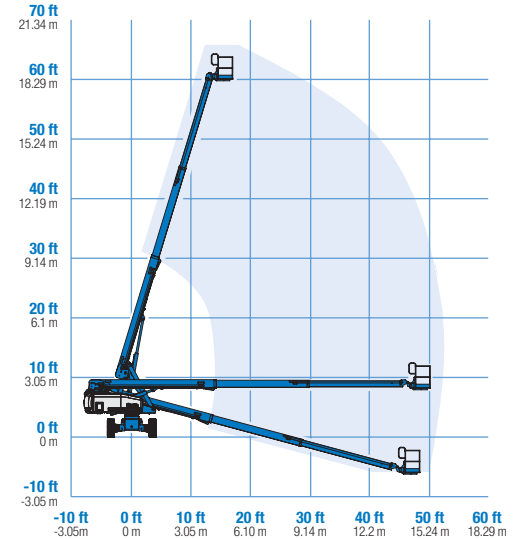


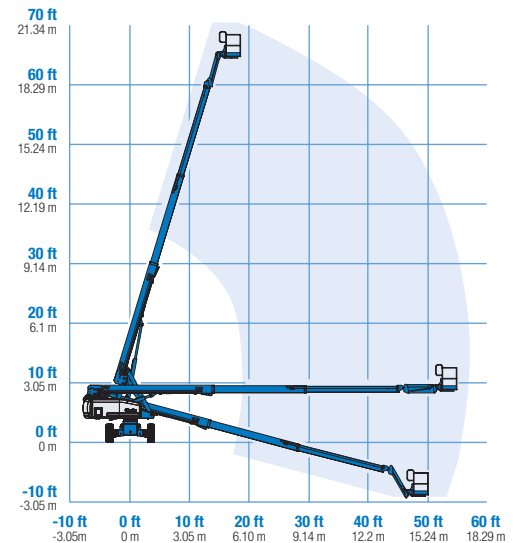
# Specifications



## RANGE OF MOTION S™-60



## RANGE OF MOTION S™-65



| MODELS                                | S™-60   |             | S™-65   |             |
|---------------------------------------|---------|-------------|---------|-------------|
| MEASUREMENTS                          | Metric  | US          | Metric  | US          |
| Working height maximum*               | 20.30 m | 66 ft       | 21.80 m | 71 ft       |
| Platform height maximum               | 18.30 m | 60 ft       | 19.80 m | 65 ft       |
| Horizontal reach maximum              | 15.50 m | 50 ft 10 in | 17.10 m | 56 ft 2 in  |
| Below ground reach                    | 1.70 m  | 5 ft 7 in   | 2.71 m  | 8 ft 11 in  |
| <b>A</b> Platform length - 8 ft model | 91 cm   | 3 ft        | 91 cm   | 3 ft        |
| Platform length - 6 ft model          | 76 cm   | 2 ft 6 in   | 76 cm   | 2 ft 6 in   |
| <b>B</b> Platform width - 8 ft model  | 2.44 m  | 8 ft        | 2.44 m  | 8 ft        |
| Platform width - 6 ft model           | 1.83 m  | 6 ft        | 1.83 m  | 6 ft        |
| <b>C</b> Height - stowed              | 2.72 m  | 8 ft 11 in  | 2.72 m  | 8 ft 11 in  |
| <b>D</b> Length - stowed              | 8.51 m  | 27 ft 11 in | 9.5 m   | 31 ft 2 in  |
| Length - transport (jib tucked under) | —       | —           | 7.60 m  | 25 ft       |
| <b>E</b> Width (with standard tyres)  | 2.49 m  | 8 ft 2 in   | 2.49 m  | 8 ft 2 in   |
| <b>F</b> Wheelbase                    | 2.5 m   | 8 ft 2.5 in | 2.5 m   | 8 ft 2.5 in |
| <b>G</b> Ground clearance - centre    | 37 cm   | 1 ft 2.5 in | 37 cm   | 1 ft 2.5 in |

| PRODUCTIVITY                     |                      |            |                      |            |
|----------------------------------|----------------------|------------|----------------------|------------|
| Lift capacity                    | 227 kg               | 500 lbs    | 227 kg               | 500 lbs    |
| Platform rotation                | 160°                 | 160°       | 160°                 | 160°       |
| Vertical jib rotation            | —                    | —          | 135°                 | 135°       |
| Turntable rotation               | 360° continuous      |            | 360° continuous      |            |
| Turntable tailswing              | 1.22 m               | 4 ft       | 1.22 m               | 4 ft       |
| Drive speed - 2WD stowed         | 6.4 km/h             | 4.0 mph    | 6.4 km/h             | 4.0 mph    |
| Drive speed - 4WD stowed         | 4.8 km/h             | 3.0 mph    | 4.8 km/h             | 3.0 mph    |
| Drive speed - raised or extended | 1.1 km/h             | 0.68 mph   | 1.1 km/h             | 0.68 mph   |
| Gradeability** stowed - 2WD      | 30%                  | 30%        | 30%                  | 30%        |
| Gradeability** stowed - 4WD      | 45%                  | 45%        | 45%                  | 45%        |
| Turning radius - inside          | 2.36 m               | 7 ft 9 in  | 2.36 m               | 7 ft 9 in  |
| Turning radius - outside         | 5.54 m               | 18 ft 2 in | 5.54 m               | 18 ft 2 in |
| Controls                         | 12 V DC proportional |            | 12 V DC proportional |            |
| Tyres - RT Lug                   | 355/55D 625          |            | 355/55D 625          |            |

| POWER                   |  |         |         |         |
|-------------------------|--|---------|---------|---------|
| Power source            | Ford DSG-423 4 cylinder petrol/LPG 75 hp (56 kW)<br>Deutz D 2011 L03i cylinder diesel 48 hp (36 kW)<br>Perkins 404D-22 4 cylinder diesel 51 hp (38 kW) |         |         |         |
| Auxiliary power unit    | 12 V DC  | 12 V DC | 12 V DC | 12 V DC |
| Hydraulic tank capacity | 170 L  | 45 gal  | 170 L   | 45 gal  |
| Fuel tank capacity      | 132 L  | 35 gal  | 132 L   | 35 gal  |

| WEIGHT***            |            |             |            |             |
|----------------------|------------|-------------|------------|-------------|
| 2WD (CE air tyres)   | 9,308 kg   | 20,520 lbs  | 10,024 kg  | 22,100 lbs  |
| 4WD (CE air tyres)   | 9,385 kg   | 20,690 lbs  | 10,102 kg  | 22,270 lbs  |
| CE Foam Filled tyres | add 343 kg | add 756 lbs | add 343 kg | add 756 lbs |

### STANDARDS COMPLIANCE

CE EN280, PB-10-611-03

\* The metric equivalent of working height adds 2 m to platform height. U.S. adds 6 ft to platform height.

\*\* Gradeability applies to driving on slopes, see Operator's Manual for details regarding slope ratings.

\*\*\* Weight will vary depending on options and/or country standards.